

# MULTIFIX SFT series

Fixing clamps



## Technical data

### Accessories

#### Fixing clamps

MULTIFIX fixing clamps are particularly suitable when a series of pipelines must be installed requiring neat and high precision installation. These brackets make it possible to install various pipelines of different types and diameters, rapidly, easily, and, more importantly, economically.

MULTIFIX clamps support, guide, and absorb impact and vibration, protecting the pipes and dispensing with the need for complex and unsightly mounting systems with angle clamps etc.

An orderly layout facilitates maintenance resulting in significant savings in running costs; it also allows intuitive visual design of the plant, which can be assembled easily even without specialised labour.

#### Materials

- Pair of brackets: Galvanized steel
- Bush: NBR
- Spacer: Steel
- Studs: Steel
- Screws: Steel
- Foot and screw: Steel

#### Weight

SFT 38 1	0.050 kg
SFT 51 1	0.100 kg
SFT 78 1	0.570 kg

#### Operating temperature

From -25 °C to + 100 °C



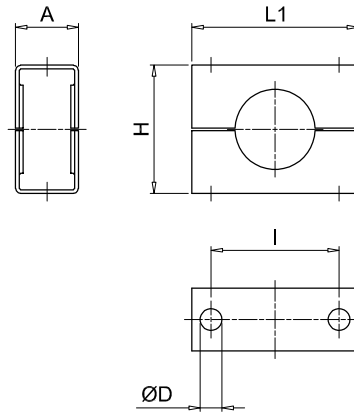
## Designation & Ordering code

### COMPLETE FIXING CLAMP

Serie	Configuration example :			
<b>SFT</b>	SFT	51	19	P01
Size				
<b>38</b>	Height 38 mm - 1 1/2"			
<b>51</b>	Height 51 mm - 2"			
<b>78</b>	Height 78 mm - 3"			
Number of pipe	38	51	78	
<b>1</b>	Single pipe	•	•	•
<b>16</b>	Nr. 16 pipes	-	-	•
<b>19</b>	Nr. 19 pipes	-	•	-
<b>26</b>	Nr. 26 pipes	•	-	-
Execution				
<b>P01</b>	MP Filtri standard			
<b>Pxx</b>	Customized			

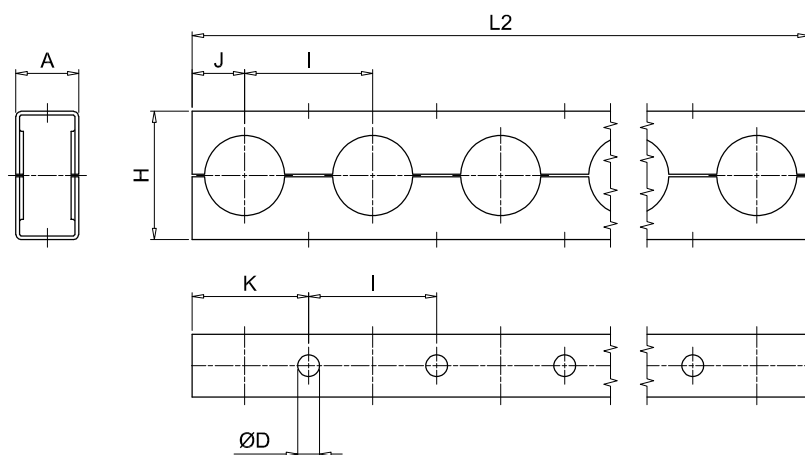
SFT

Single pipe



SFT

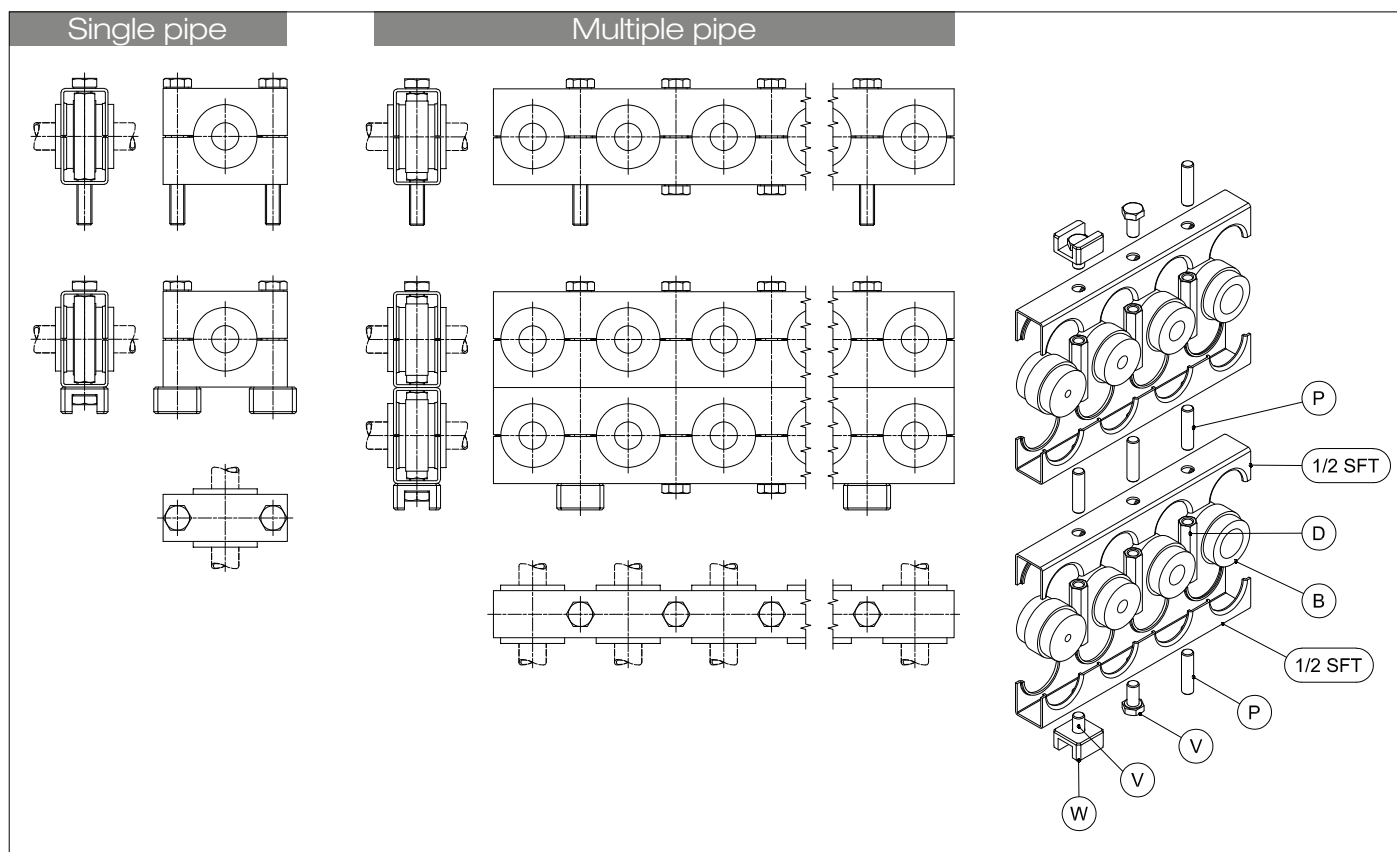
Multiple pipe



Size	A [mm]	ØD [mm]	H [mm]	I [mm]	J [mm]	K [mm]	L1 [mm]	L2 [mm]
<b>38</b>	25	8.7	38	38.1	15	34	56	982
<b>51</b>	25	8.7	51	50.8	21	46	66	956
<b>78</b>	41	11.1	78	76.2	35	73	95	1213

# SFT MULTIFIX

## Assembly



## Designation & Ordering code

## Dimensions

### RUBBER BUSH

Configuration example: **B** | **51** | **1820**

#### Series

**B** Rubber bush

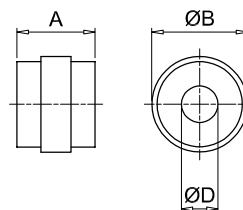
#### Size

**38**  
**51**  
**78**

#### Pipe diameter

	38	51	78
<b>6</b> Pipe Ø6 mm	•	•	
<b>8</b> Pipe Ø8 mm	•	•	•
<b>10</b> Pipe Ø10 mm - 1/8"	•	•	•
<b>1214</b> Pipe Ø12 ÷ 14 mm - 1/4"	•	•	•
<b>1516</b> Pipe Ø15 ÷ 16 mm - 3/8"	•	•	•
<b>1820</b> Pipe Ø18 ÷ 20 mm - 1/2"	•	•	•
<b>22</b> Pipe Ø22 mm - 5/8"		•	•
<b>25</b> Pipe Ø25 mm - 3/4"		•	•
<b>28</b> Pipe Ø28 mm		•	
<b>2830</b> Pipe Ø28 ÷ 30 mm - 7/8"			•
<b>33</b> Pipe Ø33 mm - 1"			•
<b>3538</b> Pipe Ø35 ÷ 38 mm - 1 1/8"			•
<b>42</b> Pipe Ø42 mm - 1 1/4"			•
<b>50</b> Pipe Ø50 mm			•

**B**



Size	A [mm]	ØB [mm]
<b>38</b>	31	25
<b>51</b>	31	38
<b>78</b>	45	59

Pipe diameter	ØD [mm]	Ø nom. pipe [inch]
<b>6</b>	6	-
<b>8</b>	8	-
<b>10</b>	10	1/8"
<b>1214</b>	12÷14	1/4"
<b>1516</b>	15÷16	3/8"
<b>1820</b>	18÷20	1/2"
<b>22</b>	22	5/8"
<b>25</b>	25	3/4"
<b>28</b>	28	-
<b>2830</b>	28÷30	7/8"
<b>33</b>	33	1"
<b>3538</b>	35÷38	1 1/8"
<b>42</b>	42	1 1/4"
<b>50</b>	50	-

## HEXAGON CONNECTION NUT D

Configuration example: **D** **51** **M**

Series

**D** Hexagon connection nut

Size

**38**

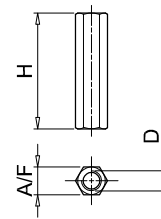
**51**

**78**

Screws

**M** Metric

**U** UNC



Size	Screws [mm]	D [mm]	H [mm]	A/F [mm]
<b>38</b>	M	M8	33	11
	U	5/16" UNC		
<b>51</b>	M	M8	46	11
	U	5/16" UNC		
<b>78</b>	M	M10	72	13
	U	3/8" UNC		

## STUD BOLT P

Configuration example: **P** **3851** **M**

Series

**P** Stud bolt

Size

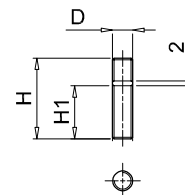
**38 - 51**

**78**

Screws

**M** Metric

**U** UNC



Size	Screws [mm]	D [mm]	H [mm]	H1 [mm]
<b>38 - 51</b>	M	M8	32	21
	U	5/16" UNC		
<b>78</b>	M	M10	38	22
	U	3/8" UNC		

## HEXAGON HEAD SCREW V

Configuration example: **V** **3851** **M**

Series

**V** Hexagon head screw

Size

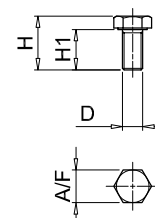
**38 - 51**

**78**

Screws

**M** Metric

**U** UNC



Size	Screws [mm]	D [mm]	H [mm]	H1 [mm]	A/F [mm]
<b>38 - 51</b>	M	M8	21	16	13
	U	5/16" UNC			
<b>78</b>	M	M10	36	30	17
	U	3/8" UNC			

## WELDING FOOT W

Configuration example: **W** **3851**

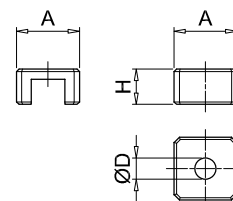
Series

**W** Welding foot

Size

**38 - 51**

**78**



Size	H [mm]	ØD [mm]	A [mm]
<b>38 - 51</b>	25	8.5	14
<b>78</b>	32	11	16